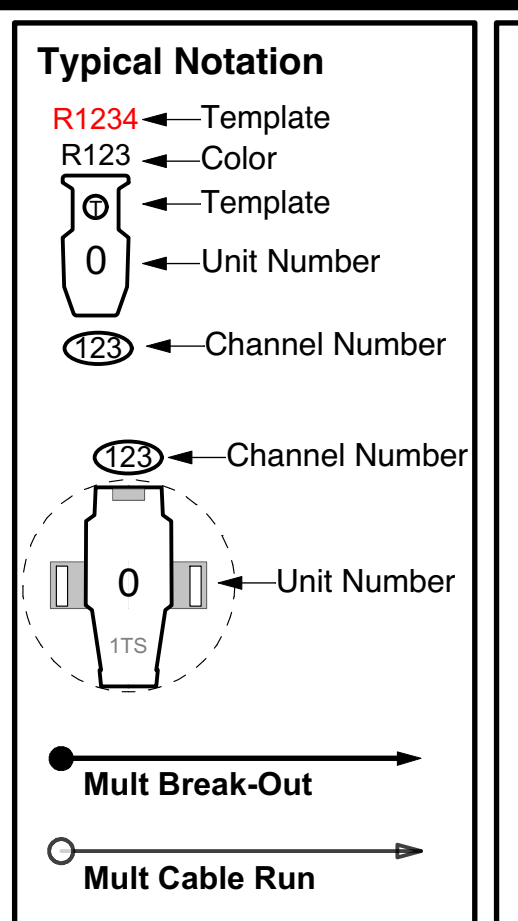
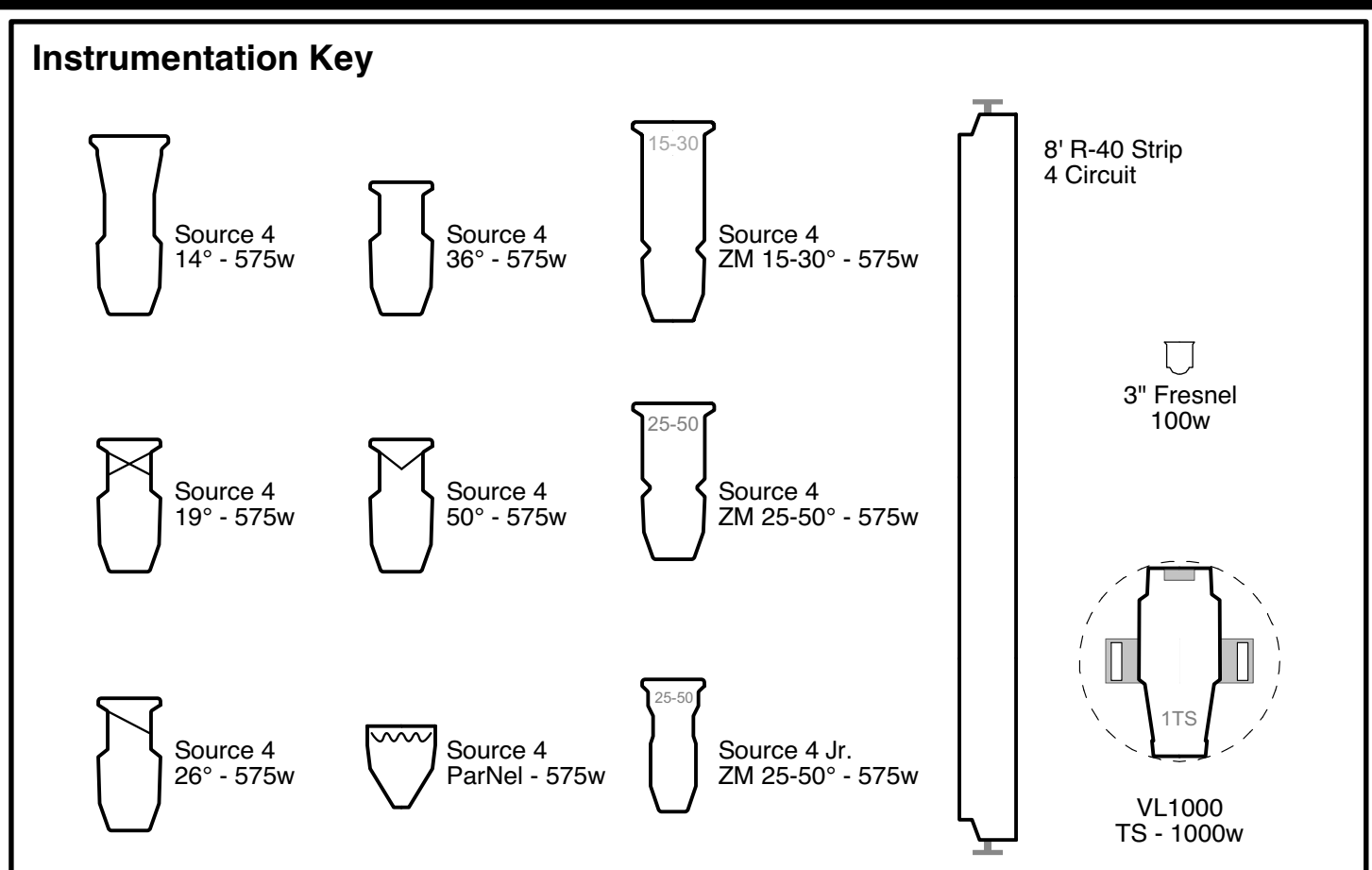
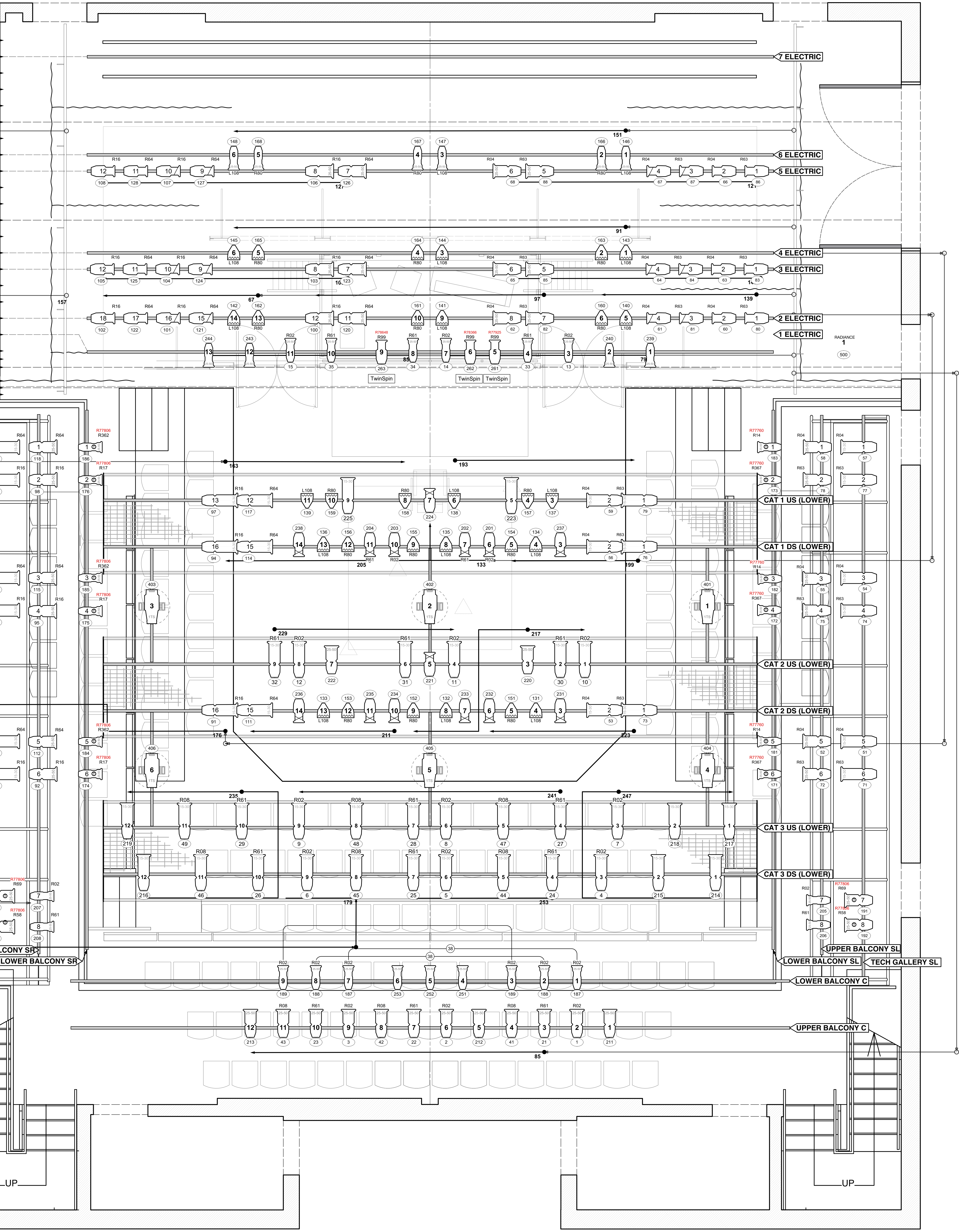


FLY LINE SCHEDULE  
(RAIL LOCATION ON DECK)

0'-0"	BOUNCE—21'-2"	41
14'-6"	7 ELECTRIC—20'-2"	39
0'-0"	RP SCREEN—19'-2"	37
	BLACK SCRIM—18'-2"	35
0'-0"	FULL STAGE BLACK—17'-2"	33
	3 BORDER—16'-2"	31
		29
18'-8"	6 ELECTRIC—14'-2"	27
20'-0"	5 ELECTRIC—13'-2"	25
		23
0'-0"	LEGS—11'-2"	21
	BORDER—10'-2"	19
	EMPTY BATTEN—9'-2"	17
21'-8"	4 ELECTRIC—8'-2"	15
21'-6"	3 ELECTRIC—7'-2"	13
		11
20'-0"	2 ELECTRIC—4'-2"	7
17'-2"	1 ELECTRIC—3'-2"	5
0'-0"	TRAVELER—2'-2"	3
	WINDOW—1'-8"	2
18'-4"	TEASER & DS WALL	1
	TORM PANELS—0'-4"	A
22'-0"	DEAD HUNG BORDER—0'-1"	B
	OPEN—0'-6"	C



**Mult. Distribution by Location**

1 ELECTRIC 73, 79, 85	GROUND ROW 20, 257	CATWALK 1 133, 163, 193, 199, 205
2 ELECTRIC 67, 97, 139	SL L. BALCONY 43, DIM 157, 175	CATWALK 2 211, 217, 223, 229, DIM 176
3 ELECTRIC 103, 145	C L. BALCONY 37	CATWALK 3 235, 241, 247, 253, DIM 179, 180
4 ELECTRIC 91	SR L. BALCONY 31	SL TECH GALLERY 181, DIM 177, 178
5 ELECTRIC 121, 127	SL U. BALCONY 61, DIM 189, 190	SR TECH GALLERY 169, 187, 188
6 ELECTRIC 151	C U. BALCONY 55, 115	
7 ELECTRIC 191, 260	SR U. BALCONY 49	

**Over Stage Dim. Assignment**

67	2 ELECTRIC
73	1 ELECTRIC
79	1 ELECTRIC
85	1 ELECTRIC
91	4 ELECTRIC
97	2 ELECTRIC
103	3 ELECTRIC
109	VARI-LITES
115	UPPER BALC. CT
121	5 ELECTRIC
127	5 ELECTRIC
139	2 ELECTRIC
145	3 ELECTRIC
151	6 ELECTRIC
163	6 ELECTRIC
191	7 ELECTRIC
260	7 ELECTRIC

**Vari-lite Attributes Address List**

VL#1: 2/1-27	(Lamp address 109)
VL#2: 2/28-54	(Lamp address 110)
VL#3: 2/55-81	(Lamp address 111)
VL#4: 2/82-108	(Lamp address 112)
VL#5: 2/109-135	(Lamp address 113)
VL#6: 2/136-162	(Lamp address 114)

**Notes:**

- House Lights are Channels 450-452.
- Work Lights are Channel 453.
- Radiance Hazer to use Luminous 7 Haze Fluid.
- If templates are unavailable, designer will choose from available stock.
- Trims heights are to be measured from deck to pipe.

**Electric Staff**

Lighting Director.....Mark Berg  
AME.....Berrit Keller  
LBO.....Marty McGuire

**Revisions:**

Version #1.....2/22/2016

**Version #2**  
Date: 3/6/2016

Plate  
**1**

of 3

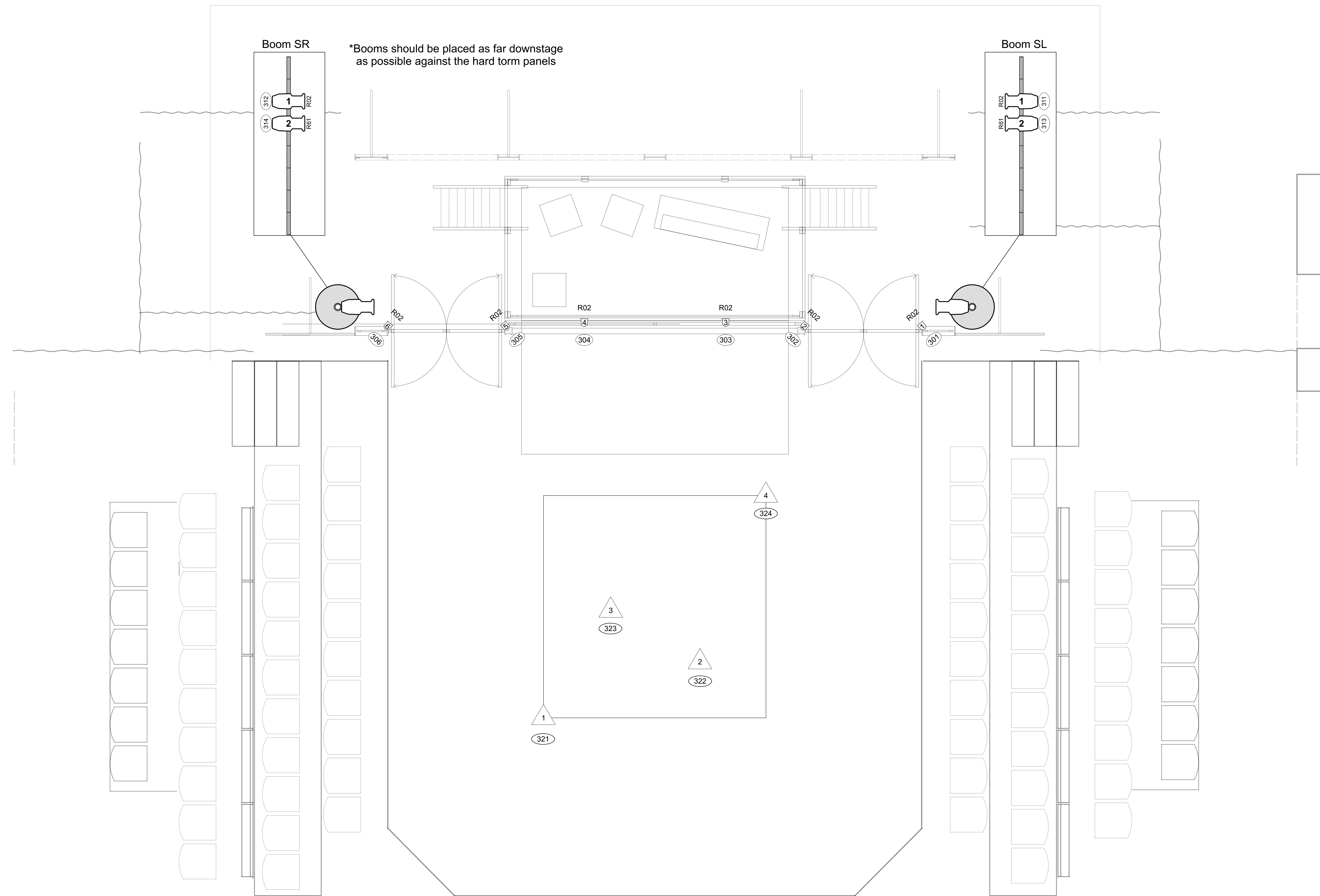
University Productions Presents:

## The Imaginary Invalid

Directed by Daniel Cantor  
Lighting Designer: Abbey Kojima  
Scenic Designer: Vincent Mountain  
Date: 2-22-2016  
Scale: 1/2" = 1'-0"

**ARTHUR MILLER THEATRE**

**REPERTORY LIGHT PLOT THRUST**



**Instrumentation Key**


**Typical Notation**

	Template
	Color
	Unit Number
	Channel Number
	Channel Number
	Unit Number
	Mult Break-Out
	Mult Cable Run

**Mult. Distribution by Location**

<b>1 ELECTRIC</b> 73, 79, 85	<b>GROUND ROW</b> 20, 257	<b>CATWALK 1</b> 133, 163, 193, 199, 205
<b>2 ELECTRIC</b> 67, 97, 139	<b>SL L. BALCONY</b> 43, DIM. 157, 175	<b>CATWALK 2</b> 211, 217, 223, 229, DIM 176
<b>3 ELECTRIC</b> 103, 145	<b>C. L. BALCONY</b> 37	<b>CATWALK 3</b> 235, 241, 247, 253, DIM 179, 180
<b>4 ELECTRIC</b> 91	<b>SR L. BALCONY</b> 31	<b>SL TECH GALLERY</b> 181, DIM 177, 178
<b>5 ELECTRIC</b> 121, 127	<b>SL U. BALCONY</b> 61, DIM 189, 190	<b>SR TECH GALLERY</b> 169, 187, 188
<b>6 ELECTRIC</b> 151	<b>C. U. BALCONY</b> 55, 115	
<b>7 ELECTRIC</b> 191, 260	<b>SR U. BALCONY</b> 49	

**Over Stage Dim. Assignment**

67	2 ELECTRIC
73	1 ELECTRIC
79	1 ELECTRIC
85	1 ELECTRIC
91	4 ELECTRIC
97	2 ELECTRIC
103	3 ELECTRIC
109	VARI-LITES
115	UPPER BALC. CT
121	5 ELECTRIC
127	5 ELECTRIC
139	2 ELECTRIC
145	3 ELECTRIC
151	6 ELECTRIC
163	6 ELECTRIC
191	7 ELECTRIC
260	7 ELECTRIC

**Vari-lite Attributes Address List**

VL#1: 2/1-27	(Lamp address 109)
VL#2: 2/28-54	(Lamp address 110)
VL#3: 2/55-81	(Lamp address 111)
VL#4: 2/82-108	(Lamp address 112)
VL#5: 2/109-135	(Lamp address 113)
VL#6: 2/136-162	(Lamp address 114)

**Notes:**

- House Lights are Channels 450-452.
- Work Lights are Channel 453.
- Radiance Hazer to use Luminous 7 Haze Fluid.
- If templates are unavailable, designer will choose from available stock.
- Trims heights are to be measured from deck to pipe.

**Electric Staff**

Lighting Director.....	Mark Berg
AME.....	Berri Keller
LBO.....	Marty McGuire

**Revisions:**

Version #1.....	2/22/2016
<b>Version #2</b>	Date: 3/6/2016
Plate	<b>2</b>
	of 3

University Productions Presents:

**The Imaginary Invalid**

Directed by Daniel Cantor

Lighting Designer: Abbey Kojima

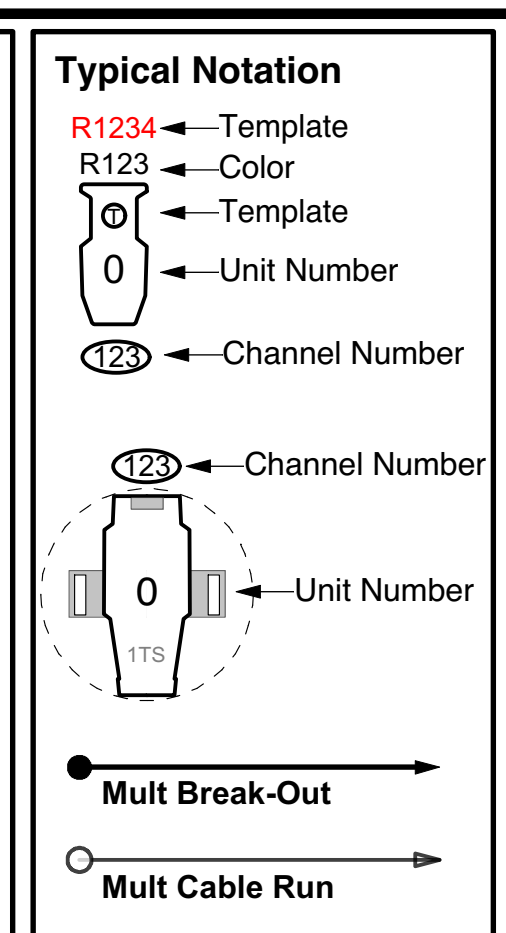
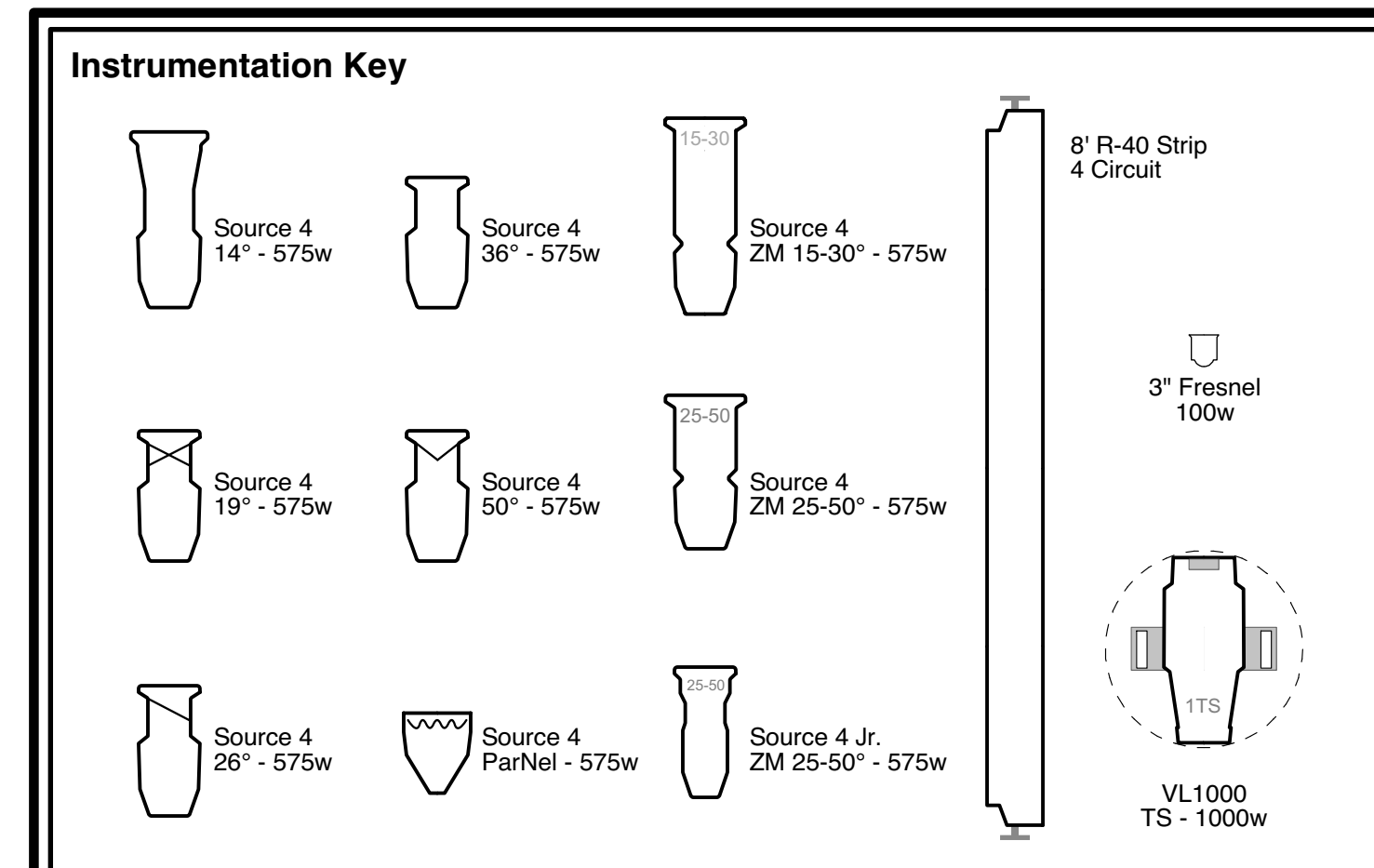
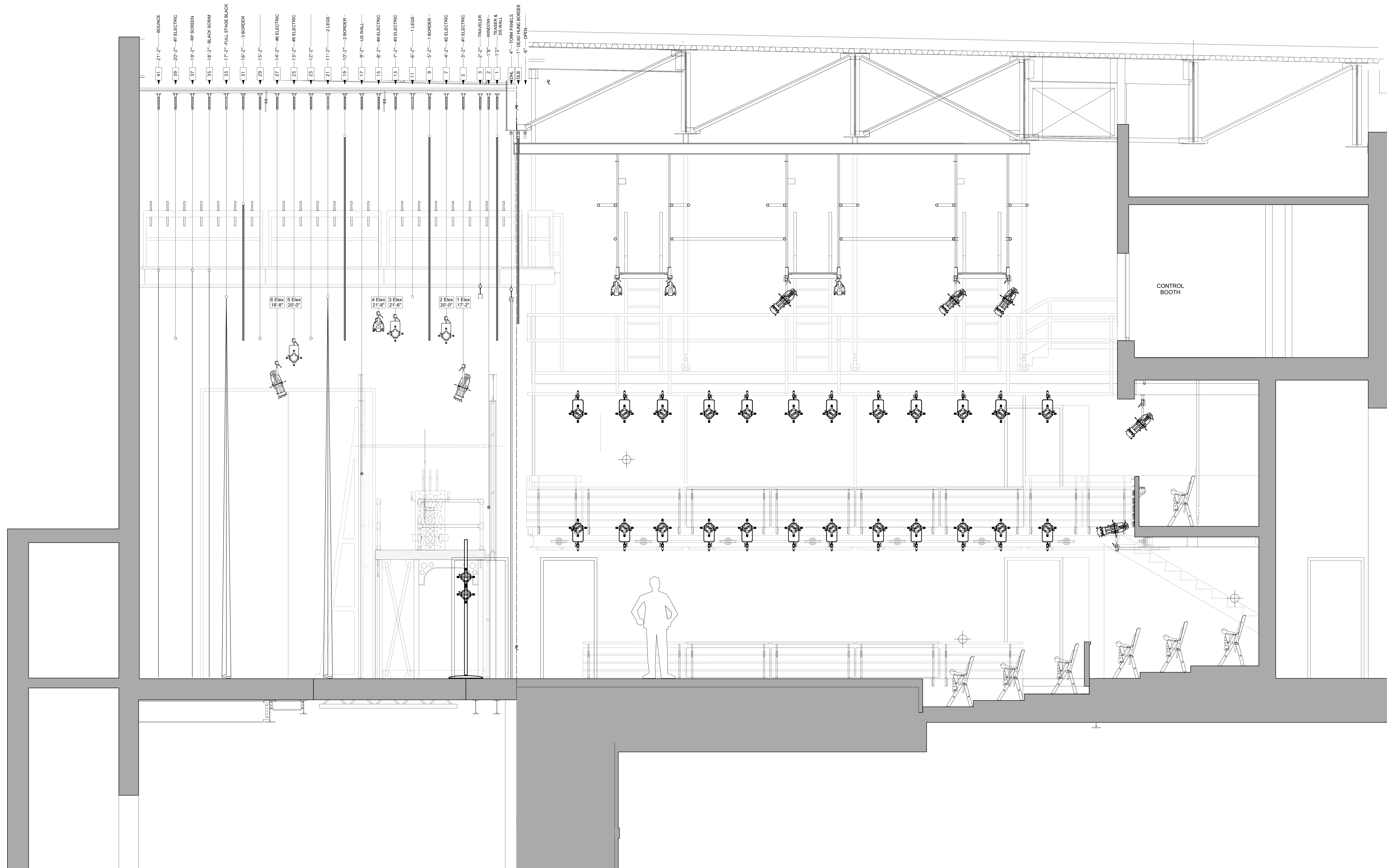
Scenic Designer: Vincent Mountain

Date: 2-22-2016

Scale: 1/2" = 1'-0"

**ARTHUR MILLER THEATRE**

**REPERTORY LIGHT PLOT THRUST - SECTION**



**Mult. Distribution by Location**

1 ELECTRIC 73, 79, 85	GROUND ROW 20, 257	CATWALK 1 133, 163, 193, 199, 205
2 ELECTRIC 67, 97, 139	SL L. BALCONY 43, DIM. 157, 175	CATWALK 2 211, 217, 223, 229, DIM 176
3 ELECTRIC 103, 145	C. L. BALCONY 37	CATWALK 3 235, 241, 247, 253, DIM 179, 180
4 ELECTRIC 91	SR L. BALCONY 31	SL TECH GALLERY 181, DIM 177, 178
5 ELECTRIC 121, 127	SL U. BALCONY 61, DIM 189, 190	SR TECH GALLERY 169, 187, 188
6 ELECTRIC 151	C. U. BALCONY 55, 115	
7 ELECTRIC 191, 260	SR U. BALCONY 49	

**Over Stage Dim. Assignment**

67	2 ELECTRIC
73	1 ELECTRIC
79	1 ELECTRIC
85	1 ELECTRIC
91	4 ELECTRIC
97	2 ELECTRIC
103	3 ELECTRIC
109	VARI-LITES
115	UPPER BALC. CT
121	5 ELECTRIC
127	5 ELECTRIC
139	2 ELECTRIC
145	3 ELECTRIC
151	6 ELECTRIC
163	6 ELECTRIC
191	7 ELECTRIC
260	7 ELECTRIC

**Vari-lite Attributes Address List**

VL#1: 2/1-27	(Lamp address 109)
VL#2: 2/28-54	(Lamp address 110)
VL#3: 2/55-81	(Lamp address 111)
VL#4: 2/82-108	(Lamp address 112)
VL#5: 2/109-135	(Lamp address 113)
VL#6: 2/136-162	(Lamp address 114)

**Notes:**

- House Lights are Channels 450-452.
- Work Lights are Channel 453.
- Radiance Hazer to use Luminous 7 Haze Fluid.
- If templates are unavailable, designer will choose from available stock.
- Trims heights are to be measured from deck to pipe.

**Electrics Staff**

Lighting Director.....	Mark Berg
AME.....	Beritt Keller
LBO.....	Marty McGuire

**Revisions:**

Version #1.....	2/22/2016
<b>Version #2</b>	
Date:	3/6/2016
Plate	<b>3</b>
	of 3

University Productions Presents:

**The Imaginary Invaaid**

Directed by Daniel Cantor

Lighting Designer: Abbey Kojima

Scenic Designer: Vincent Mountain

Date: 2-22-2016

Scale: 1/2" = 1'-0"

**ARTHUR MILLER THEATRE**

**REPERTORY LIGHT  
PLOT THRUST - SECTION**