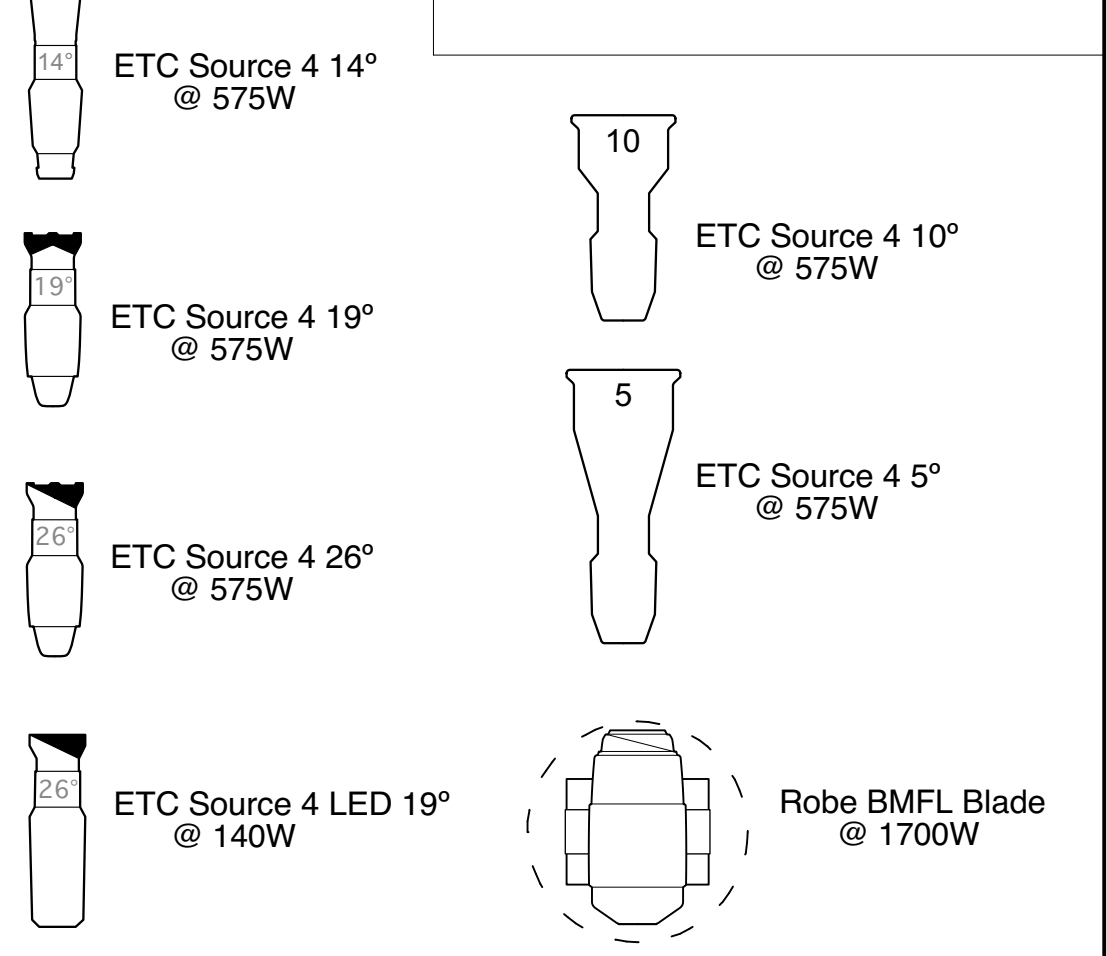


Key

Typical Symbols

- R7774 Template
- L202 Color Notation
- Unit Type
- Template
- Unit Number
- Control Channel



MUSKET
The 60th Anniversary Season

BIG FISH

Directed by Matt Kunkel

Lighting Designer: Abbey Kojima

Assistant Lighting Designer: Benjamin Richer

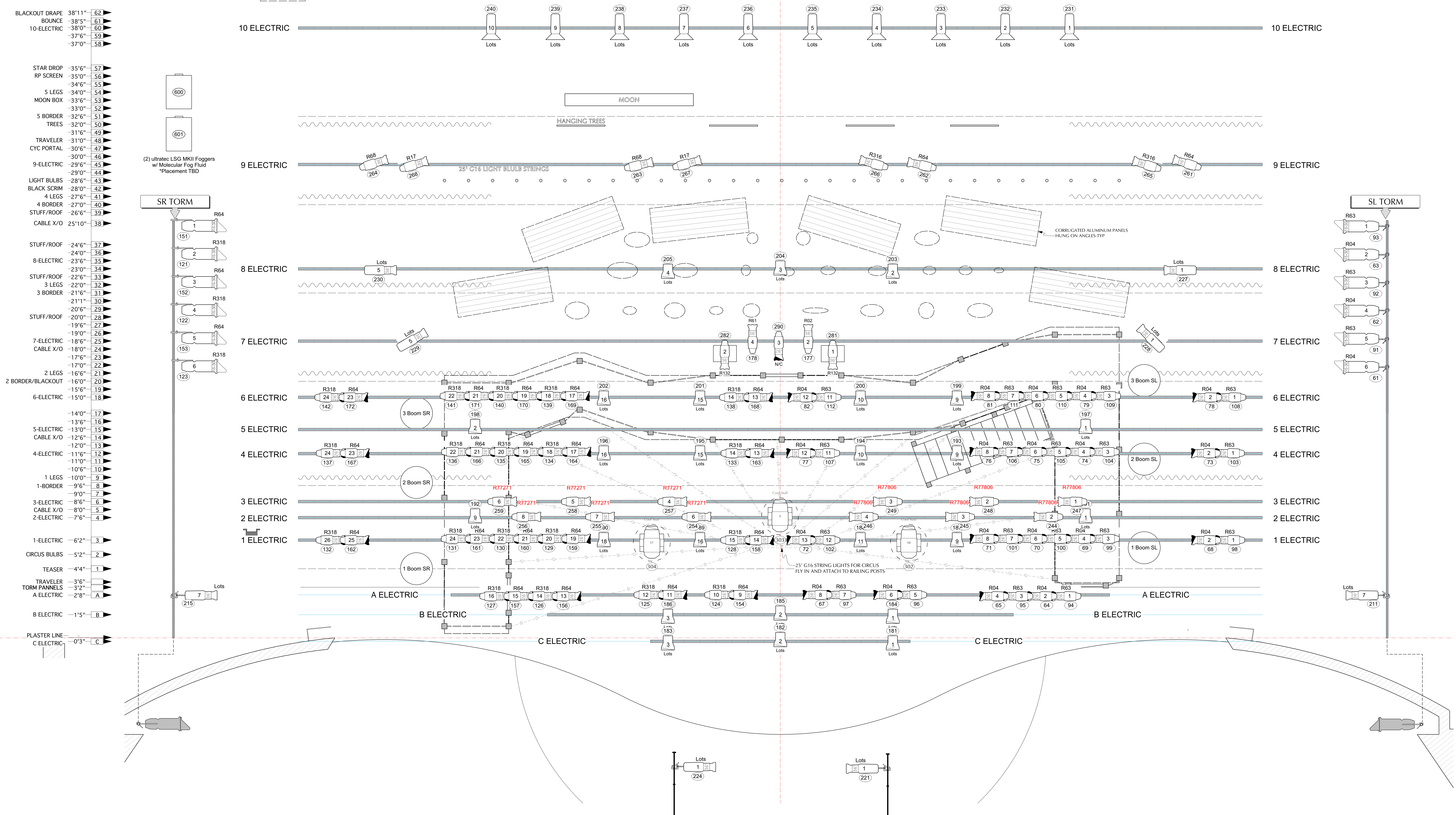
Master Electrician: Christopher Simko

Date: February 12, 2016

Revised: February 21, 2016

Scale: 1/2"=1'-0"

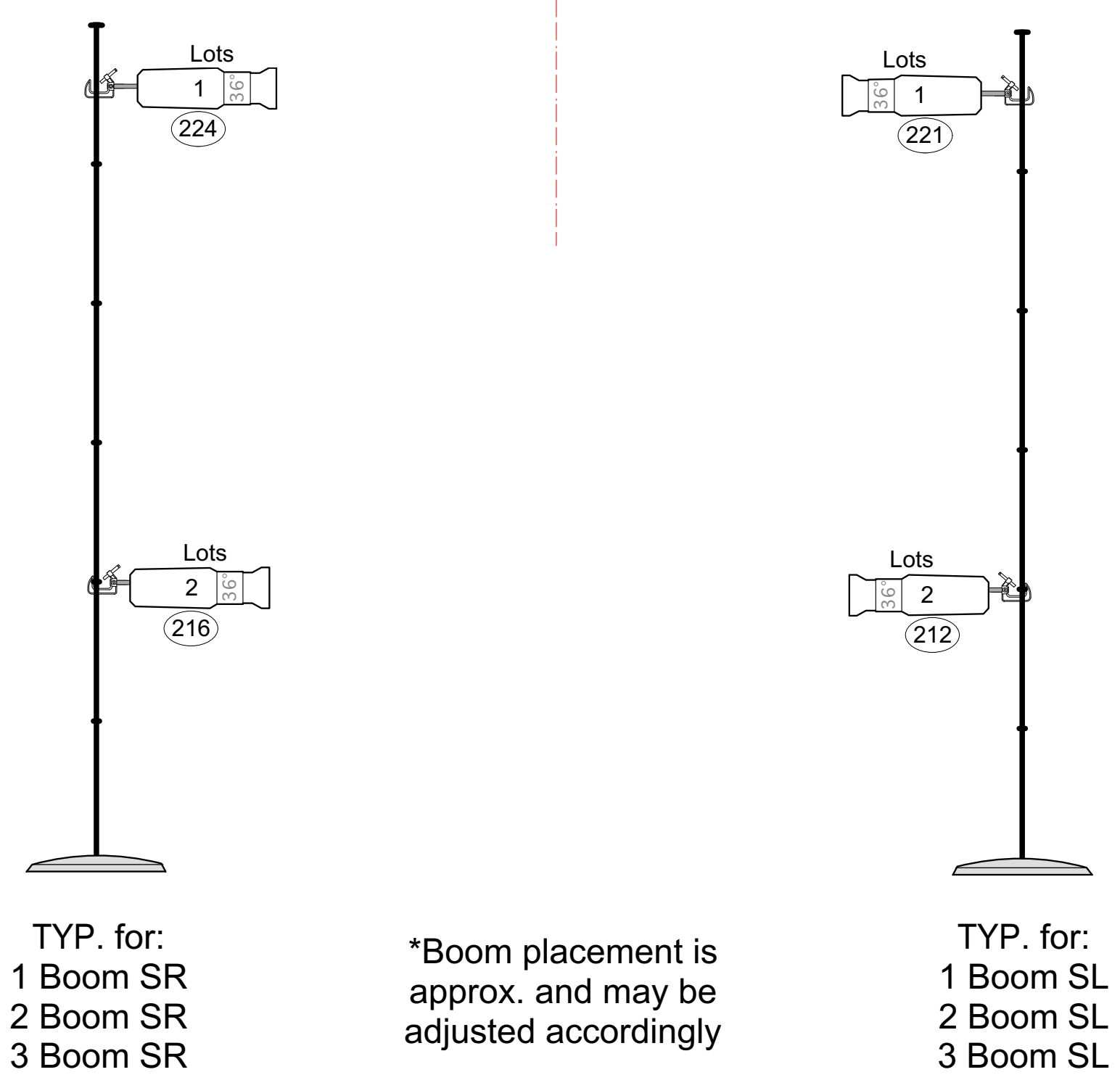
1
OF 3



BLACKOUT DRAPE	38'11"	62
BOUNCE	-38'0"	61
10-ELECTRIC	-38'0"	60
	-37'6"	59
	-37'0"	58
<hr/>		
STAR DROP	-35'6"	57
RP SCREEN	-35'0"	56
	-34'6"	55
5 LEGS	-34'0"	54
MOON BOX	-33'6"	53
	-33'0"	52
5 BORDER	-32'6"	51
TREES	-32'0"	50
	-31'6"	49
TRAVELER	-31'0"	48
CYC PORTAL	-30'6"	47
	-30'0"	46
9-ELECTRIC	-29'6"	45
	-29'0"	44
LIGHT BULBS	-28'6"	43
BLACK SCRIM	-28'0"	42
4 LEGS	-27'6"	41
4 BORDER	-27'0"	40
STUFF/ROOF	-26'6"	39
CABLE X/O	25'10"	38
<hr/>		
STUFF/ROOF	-24'6"	37
	-24'0"	36
8-ELECTRIC	-23'6"	35
	-23'0"	34
STUFF/ROOF	-22'6"	33
3 LEGS	-22'0"	32
3 BORDER	-21'6"	31
	-21'1"	30
STUFF/ROOF	-20'6"	29
	-20'0"	28
	-19'6"	27
7-ELECTRIC	-18'6"	25
CABLE X/O	-18'0"	24
	-17'6"	23
	-17'0"	22
2 LEGS	-16'6"	21
2 BORDER/BLACKOUT	-16'0"	20
	-15'6"	19
	-15'0"	18
	-14'0"	17
5-ELECTRIC	-13'6"	16
CABLE X/O	-13'0"	15
	-12'6"	14
4-ELECTRIC	-12'0"	13
	-11'6"	12
	-11'0"	11
	-10'6"	10
1 LEGS	-10'0"	9
1-BORDER	-9'6"	8
	-9'0"	7
3-ELECTRIC	-8'6"	6
CABLE X/O	-8'0"	5
2-ELECTRIC	-7'6"	4
<hr/>		
1-ELECTRIC	-6'2"	3
CIRCUS BULBS	-5'2"	2
	-4'4"	1
TEASER	-4'4"	1
TRAVELER	-3'6"	
TORM PANELS	-3'2"	
A ELECTRIC	-2'8"	A
<hr/>		
B ELECTRIC	-1'5"	B
<hr/>		
PLASTER LINE	0'3"	C
C ELECTRIC		

Key

Typical Symbols		
	R7774	Template
	L202	Color Notation
		Template
		Unit Type
		Unit Number
	420	Control Channel
	ETC Source 4 19° @ 575W	
	ETC Source 4 LED 26° @ 140W	
	ETC Source 4 26° @ 575W	
	ETC Source 4 LED 36° @ 140W	
	ETC Source 4 36° @ 575W	
	ETC Source 4 50° @ 575W	
	Robe BMFL Blade @ 1700W	
	ETC Source 4 LED w/ Eye Attachment @ 140W	
	Mini-Ten Worklights @ 1KW	



BIG FISH

Directed by Matt Kunkel

Lighting Designer: Abbey Kojima

Assistant Lighting Designer: Benjamin Richer

Master Electrician: Christopher Simko

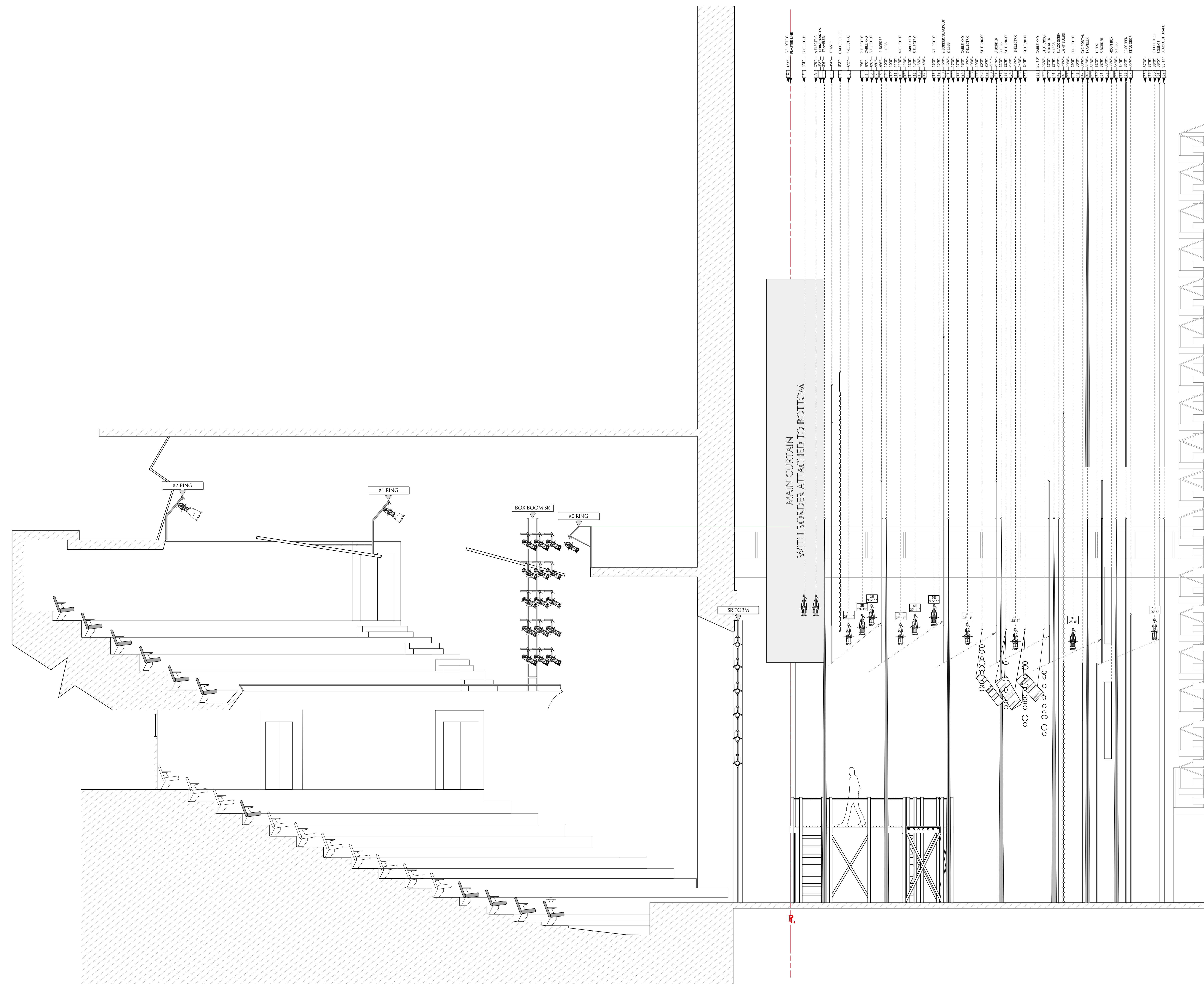
Date: February 12, 2016

Revised: February 21, 2016

Scale: 1/2"=1'-0"

2

OF 3



Gallery railing can be used as a lighting position



BIG FISH

Directed by Matt Kunkel

Lighting Designer: Abbey Kojima

Assistant Lighting Designer: Benjamin Richer

Master Electrician: Christopher Simko

Date: February 12, 2016

Revised: February 21, 2016

Scale: 1/4"=1'-0"

3

OF 3